
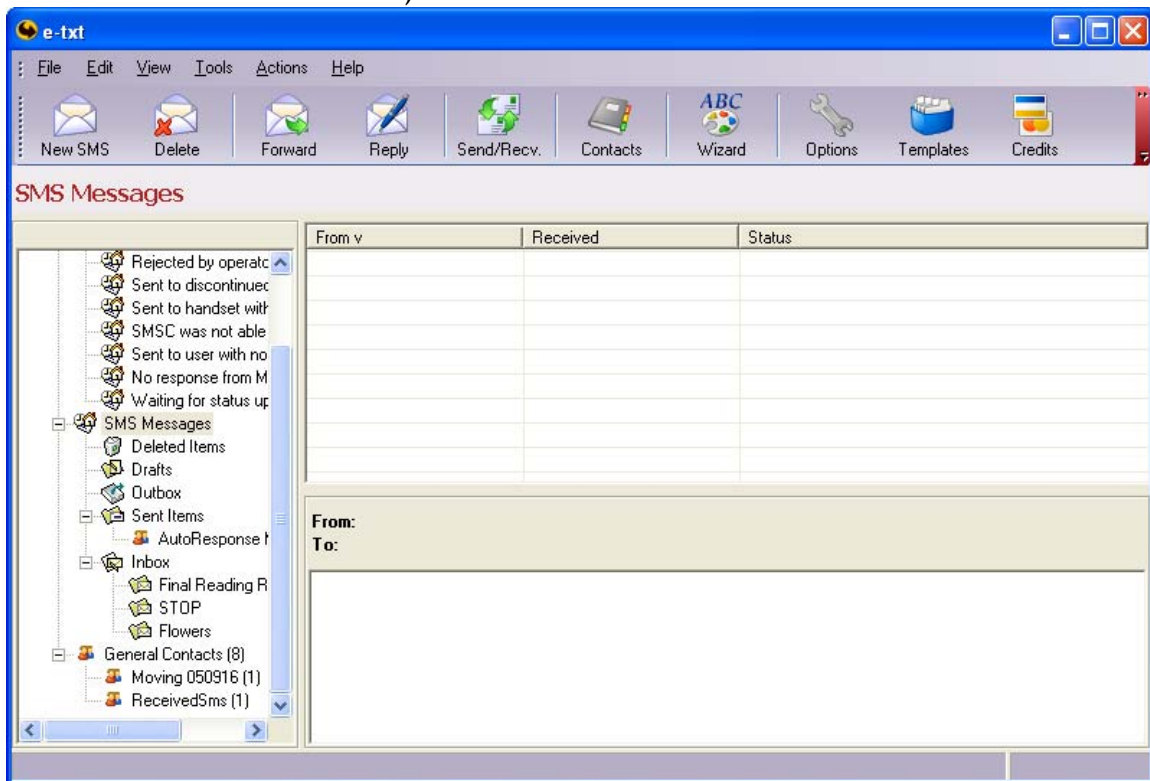


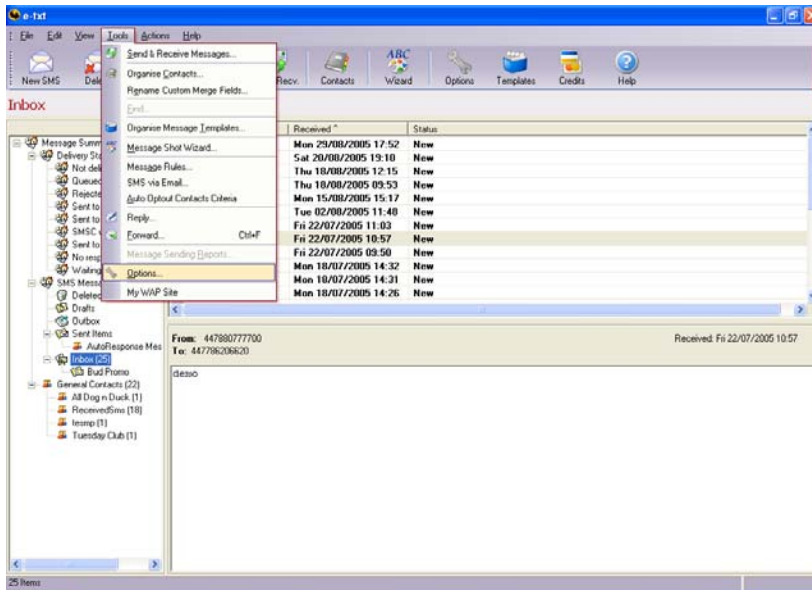
How to automatically send an email message as well as your text message

If your contacts have an email address stored in the Contacts list, you can send any text out as an email at the same time.

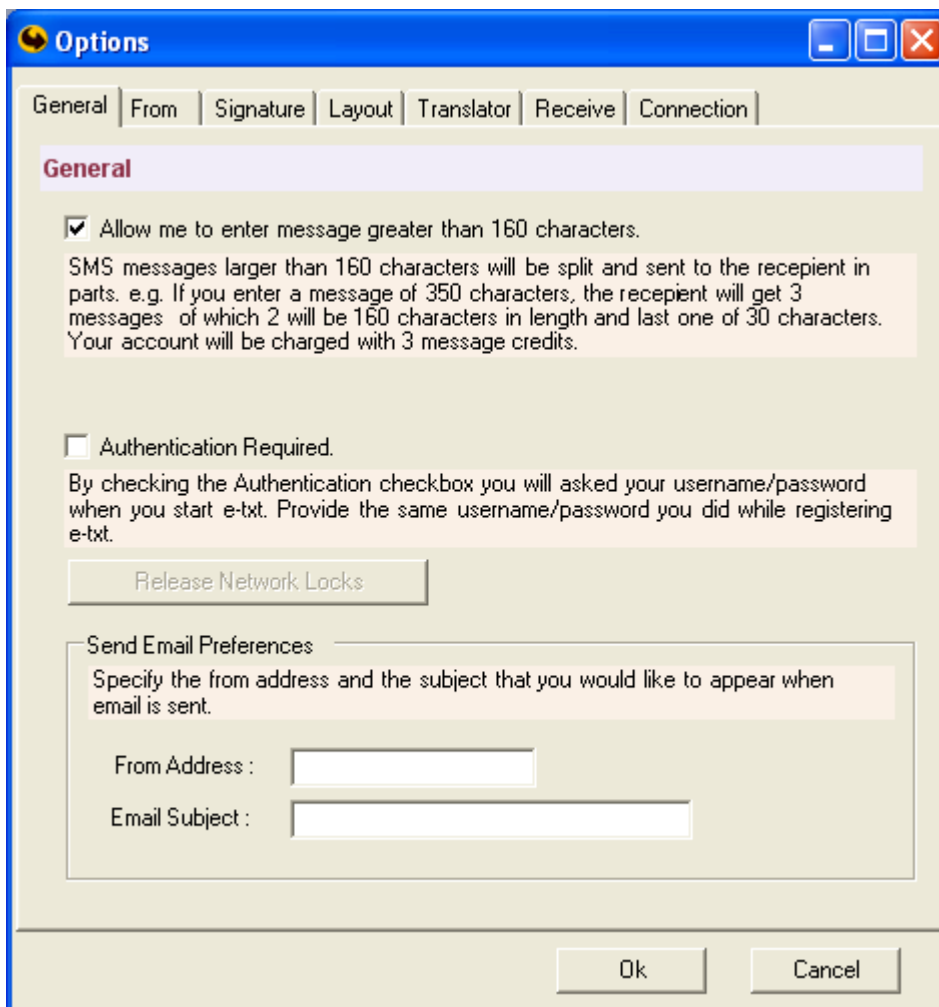
1. Open e-txt™ by clicking on the  icon on your desktop or selecting **Start-> Programs-> e-txt -> e-txt**
2. Ensure that the **SMS Messages** toolbar is displayed by having a messaging folder selected in the **Main Navigation Tree** (If a **Contacts** folder is selected the Main Toolbar changes dynamically to the **Contacts Toolbar**).



3. Go to Tools ->Options:



4. In Options, select the General Tab



5. Fill in the From Address and the Email Subject as shown below. Note you can change the Subject line each time you do a promotion.

The screenshot shows a Windows-style dialog box titled 'Options' with a blue title bar and standard window controls. It has several tabs: 'General', 'From', 'Signature', 'Layout', 'Translator', 'Receive', and 'Connection'. The 'General' tab is selected and highlighted in purple. Inside the 'General' tab, there are three main sections. The first section has a checked checkbox labeled 'Allow me to enter message greater than 160 characters.' followed by a text box explaining that SMS messages over 160 characters are split into three parts (two of 160 and one of 30) and that the account will be charged accordingly. The second section has an unchecked checkbox labeled 'Authentication Required.' followed by a text box explaining that checking this box will prompt for a username and password. Below this is a button labeled 'Release Network Locks'. The third section is titled 'Send Email Preferences' and contains a text box explaining that it is for specifying the from address and subject. Below this are two input fields: 'From Address' with the value 'info@redlion.co.uk' and 'Email Subject' with the value 'Quiz Night Tuesday'. At the bottom of the dialog are 'Ok' and 'Cancel' buttons.

Options

General | From | Signature | Layout | Translator | Receive | Connection

General

☒ Allow me to enter message greater than 160 characters.

SMS messages larger than 160 characters will be split and sent to the recipient in parts. e.g. If you enter a message of 350 characters, the recipient will get 3 messages of which 2 will be 160 characters in length and last one of 30 characters. Your account will be charged with 3 message credits.

☐ Authentication Required.

By checking the Authentication checkbox you will be asked your username/password when you start e-txt. Provide the same username/password you did while registering e-txt.

Release Network Locks

Send Email Preferences

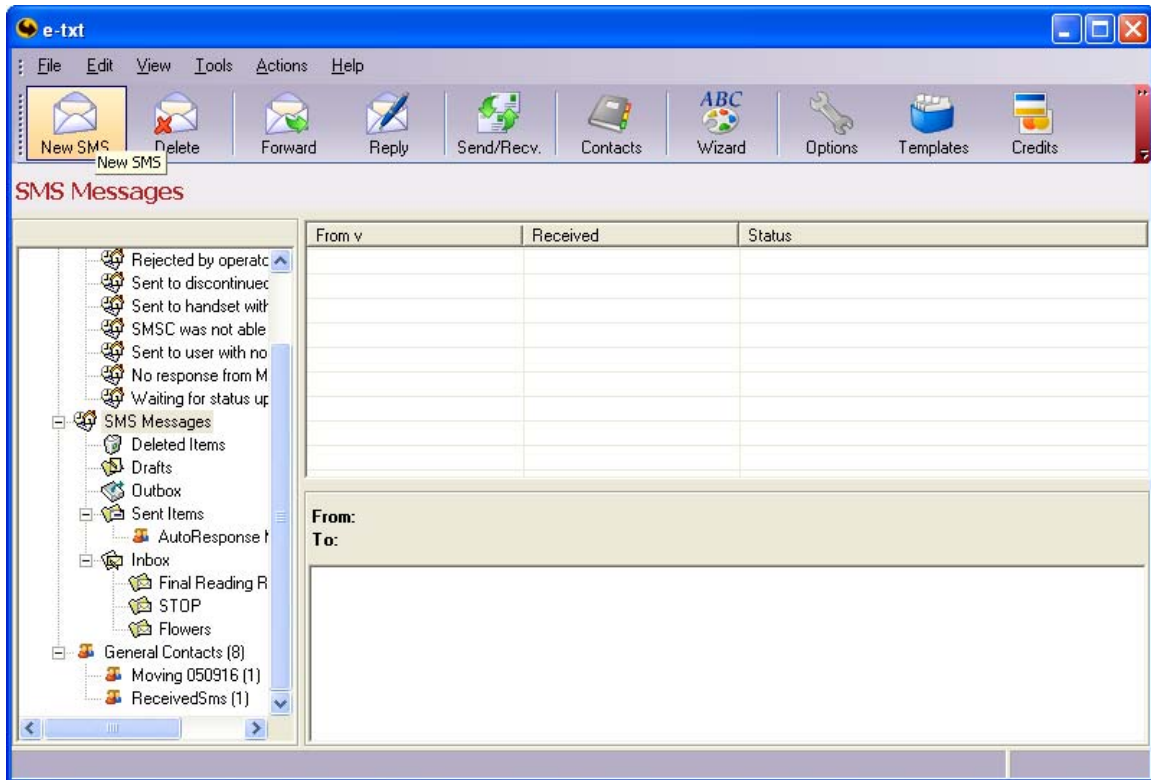
Specify the from address and the subject that you would like to appear when email is sent.

From Address : info@redlion.co.uk

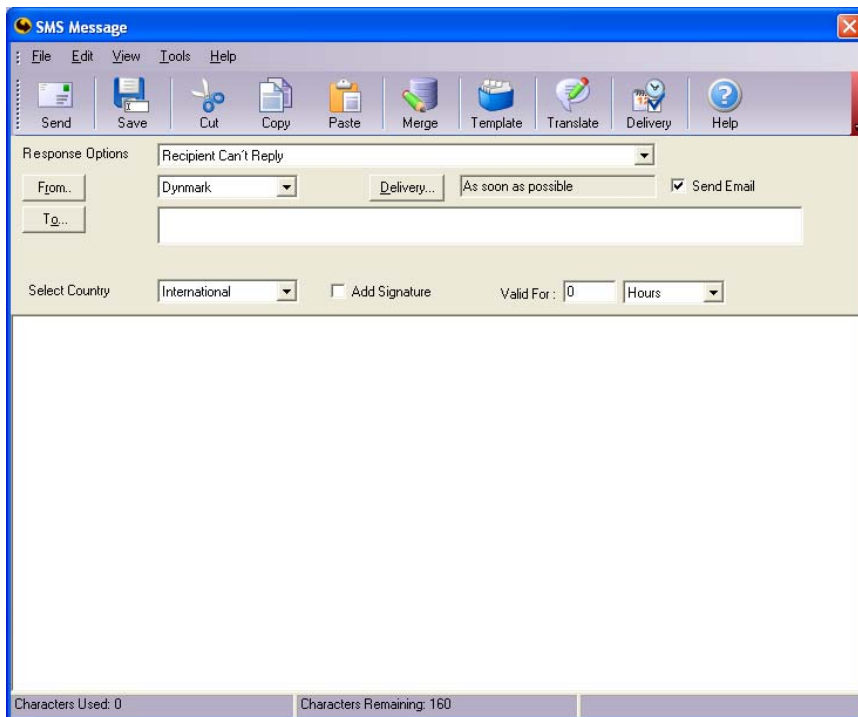
Email Subject : Quiz Night Tuesday

Ok Cancel

6. Click OK
7. Click on New SMS Window



8. Check the 'Send Email' option towards the top right of the box as shown:



When you send your text, it will now be sent as an email to those people for whom you have an email address.